



# Longwood Lingo

Nurture today—Flourish tomorrow

Our weekly Good Work and Behaviour award go to .....

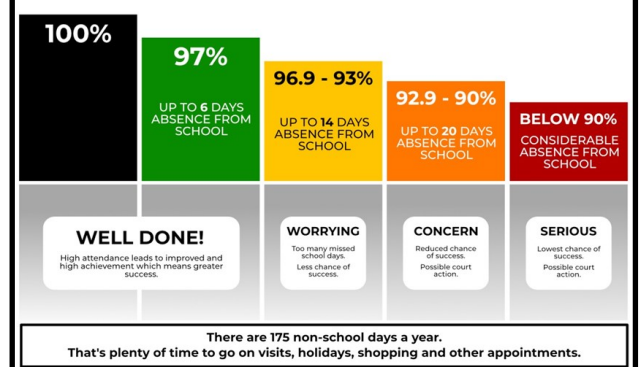
<u>CLASS</u>	<u>GOOD WORK</u>	<u>GOOD BEHAVIOUR</u>
Rec	Marnie	Ella
Year 1	Noah	Arya
Year 2	Noah	Arya
Year 3	Paxton	Lara
Year 4	Eva	Gracie
Year 5	Amelia	Riley
Year 6	Sofi	Logan

W/C 17.06.24 WEEKLY		
ATTENDANCE %		
Rec	93	WORRYING
Year 1	89	SERIOUS
Year 2	88	SERIOUS
Year 3	88	SERIOUS
Year 4	91	CONCERN
Year 5	99	WELL DONE
Year 6	85	SERIOUS

## IMPORTANT DATES

24th June	Olympic Athlete (email sent 10.06.24)
4th July	Year 4 USA Day (themed menu for all)
4th July	Year 6 SAT's camp (letter sent home 10.06.24)
16th July	PTA Disco (further info to follow)
17th July	Year 5 & 6 Summer production (further info to follow)
18th July	Farewell and good luck year 6
18th July	Last day of this academic year (school closes normal time)
2nd September	Inset Day (no children in school)
<b>3rd September</b>	<b>Children return to school</b>
6th September	Y6 Forest School
11th September	Y5 & Y6 Faith Trail visit
13th September	Y5 Forest School
24th September	Y3 & Y4 Faith Trail Visit

## WHAT IS YOUR ATTENDANCE?



## SCHOOL START TIME

School lessons begin daily at 8.30am sharp, please make sure your child is here on time or they will be marked as late.

Staffordshire County Council are very closely monitoring lateness and absence and are routinely issuing fines to parents/carers for non-compliance across the county.





# Longwood Lingo

Nurture today—Flourish tomorrow

## KS2 TRIP TO WOLLATON PARK

As a reward for writing such beautiful letters in class this week, all of Key Stag 2 (Years 3, 4, 4 and 6) are invited to spend the day at Wollaton Park on Tuesday 2nd July.

This is a free of charge trip funded by the generosity of the Royal Mail. Parental consent to be given on Parent Pay—without this your child cannot attend the trip and will remain in school for the day. A letter was emailed to all parents/carers on Wednesday (19.06.24) with full details.

## FOUL AND ABUSIVE LANGUAGE/ THREATENING BEHAVIOUR

We have received many complaints this week from upset parents whose children have witnessed foul and abusive language and threatening behaviour being used at the school gates towards other parents and staff members. We will not tolerate abuse of any sort and will take action if necessary.

## PARKING

We have received several complaint again this week from local residents about inconsiderate parking form parents/carers at the start and end of the school day.

PLEASE PARK CAREFULLY AND RESPONSIBLY AND BE RESPECTFUL TO OUR RESIDENTIAL NEIGHBOURS.



## SCHOOL LUNCHES

School lunches need to be ordered by **midnight on Wednesdays for the following school week**. You can order lunches up to the end of each half term if you choose. This pre-ordering system applies to all paying children, Free School Meal and Universal Free School Meal children.



## FAITH TRAIL VISIT

Letters have been emailed out to parents/carers of our current Years 2, 3, 4 and 5 children about a school trip to the Open Centre in Derby to follow the Faith Trail. This visit covers many different religions, faiths and charitable causes. It is available to book now on Parent Pay. This trip is in September 2024, the new academic year.

## **CHILD PROTECTION CONTACT NUMBERS**

**STAFFORDSHIRE CHILDRENS ADVICE & SUPPORT SERVICE (SCASS): 0300 111 8007**

**SAFEGUARDING: 01785 895836**

**CHILD LINE: 0800 1111**

**NSPCC HELP LINE: 0800 800 5000**

*Everyone has a duty to keep our children safe*



# Longwood Lingo

Nurture today—Flourish tomorrow

## LINKS TO INFORMATION ABOUT FINANCIAL SUPPORT

### Free School Meals

<https://www.gov.uk/apply-free-school-meals>

**Healthy Start;** for people more than 10 weeks pregnant or with children under four, help to buy healthy food and milk.

<https://www.healthystart.nhs.uk/>

**Sure Start Maternity Grant;** A one-off payment of £500 to help towards the costs of having your first child

<https://www.gov.uk/sure-start-maternity-grant>

**Help for Households;** see what support is available to help with the cost of living and save money with our energy saving tips;

<https://helpforhouseholds.campaign.gov.uk/>

### Universal Credit

<https://www.gov.uk/universal-credit>

**Universal Credit:** further information for families

<https://www.gov.uk/government/publications/universal-credit-and-your-family-quick-guide/universal-credit-further-information-for-families>

### Move to UC

<https://ucmove.campaign.gov.uk/>

**Council Tax Reduction-** for those on a low income or claim benefits.

<https://www.gov.uk/apply-council-tax-reduction>

**Discretionary Housing Payments (DHPs);** financial support to help with rent or housing costs.

<https://www.gov.uk/government/publications/claiming-discretionary-housing-payments/claiming-discretionary-housing-payments>

**Tax-Free Childcare;** Up to £500 every 3 months (up to £2,000 a year) for each child to help with the costs of childcare.

<https://www.gov.uk/tax-free-childcare>

### Help paying for childcare

<https://www.childcarechoices.gov.uk/>

**Universal Credit & childcare;** Claim back up to 85% childcare costs if eligible for UC

<https://www.gov.uk/help-with-childcare-costs/universal-credit>

**Help to Save;** Get help with savings if you're on a low income (Help to Save)

<https://www.gov.uk/get-help-savings-low-income/what-youll-get>

### Healthcare Travel Costs Scheme (HTCS)

<https://www.nhs.uk/nhs-services/help-with-health-costs/healthcare-travel-costs-scheme-htcs/>

### Money helper

<https://www.moneyhelper.org.uk/en>

### Budget Planner

<https://www.moneyhelper.org.uk/en/everyday-money/budgeting/budget-planner>

### Citizens Advice Energy Advice;

<https://www.citizensadvice.org.uk/energy-advice/>